

# INTELLISWITCH

## WP4: Metallurgical Characterization

### Degradation of rail steel in S&C's

Carsten Jörn Rasmussen, Banedanmark

Presented at Intelliswitch symposium, August 2017

banedanmark



# Content:

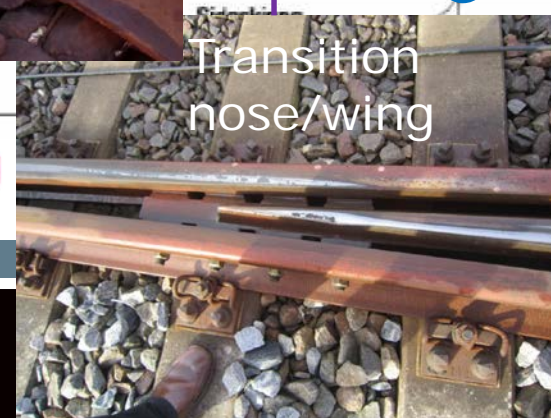
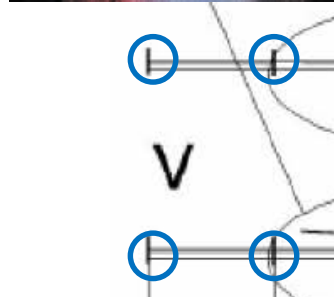
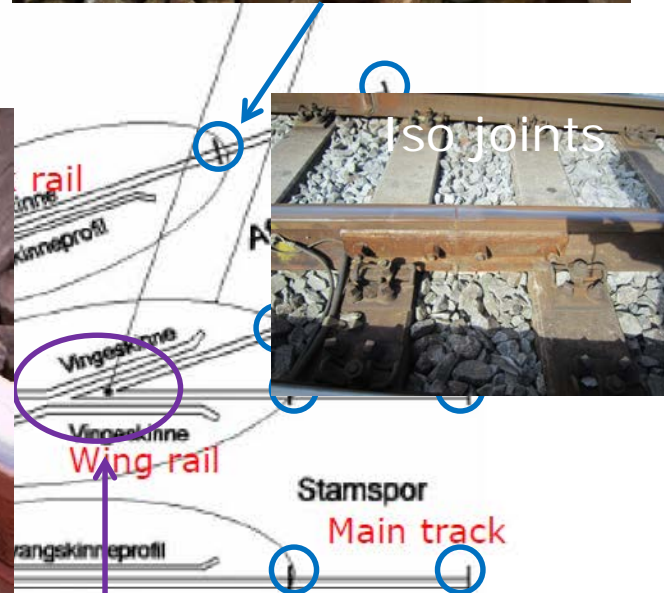
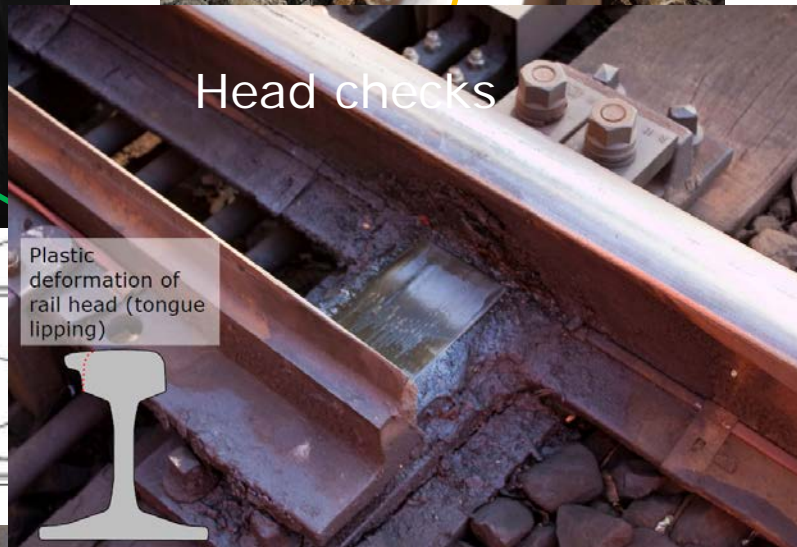
- Degradation of steel components in S&C 's
- Maintenance
- Noise





# Switches & Crossings, S&C

## Parts of a turnout



# Head checks





# Squat causing heavy impact in track





# Squats in stock rail





# Defect in weld





# Corrugation





# Isolation joint









# Degradated transition zone nose/wing





# Transition zone nose/wing





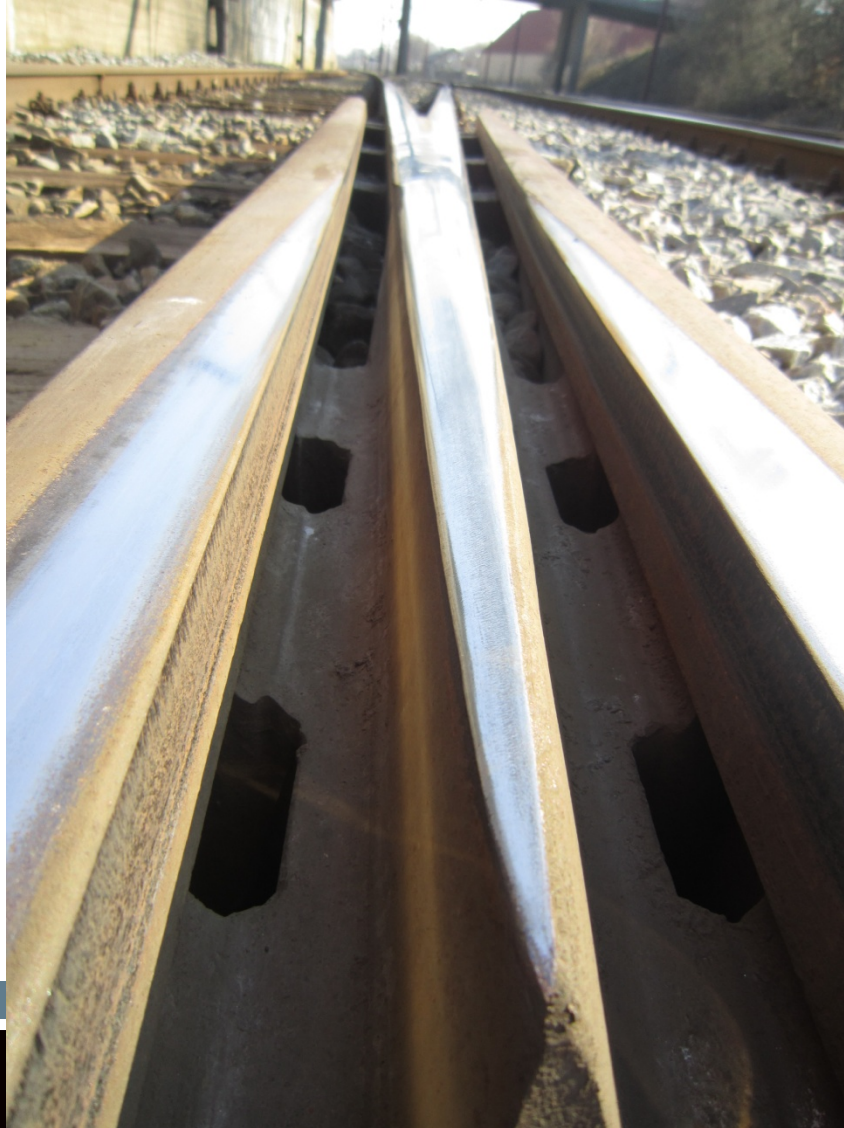
# Transition from nose to wing







# Deformations in nose of crossing





Worn crossing, which  
needs a supplemental  
welding

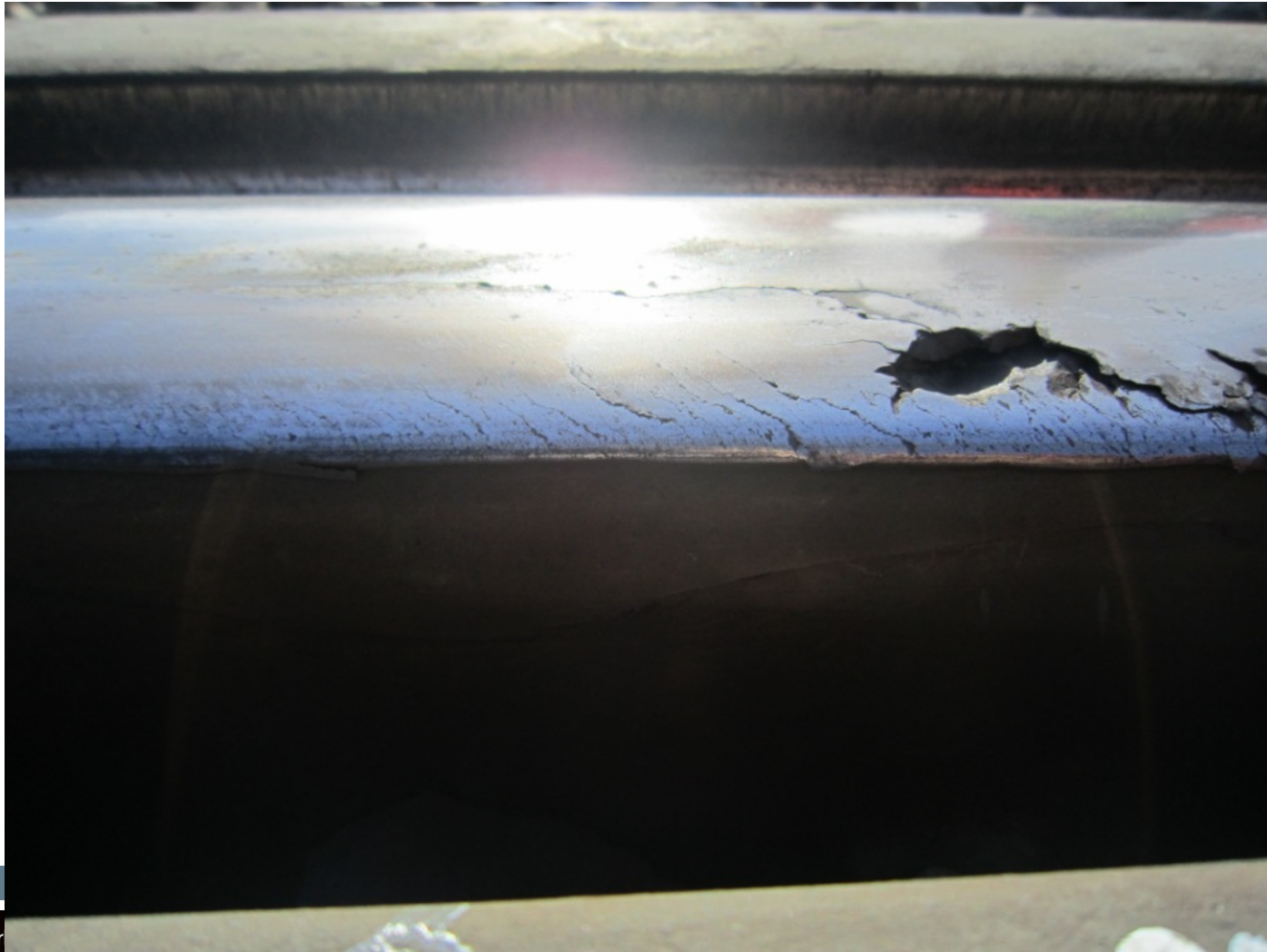




# Degradation of nose of crossing



# Deformations and cracks in nose of crossing

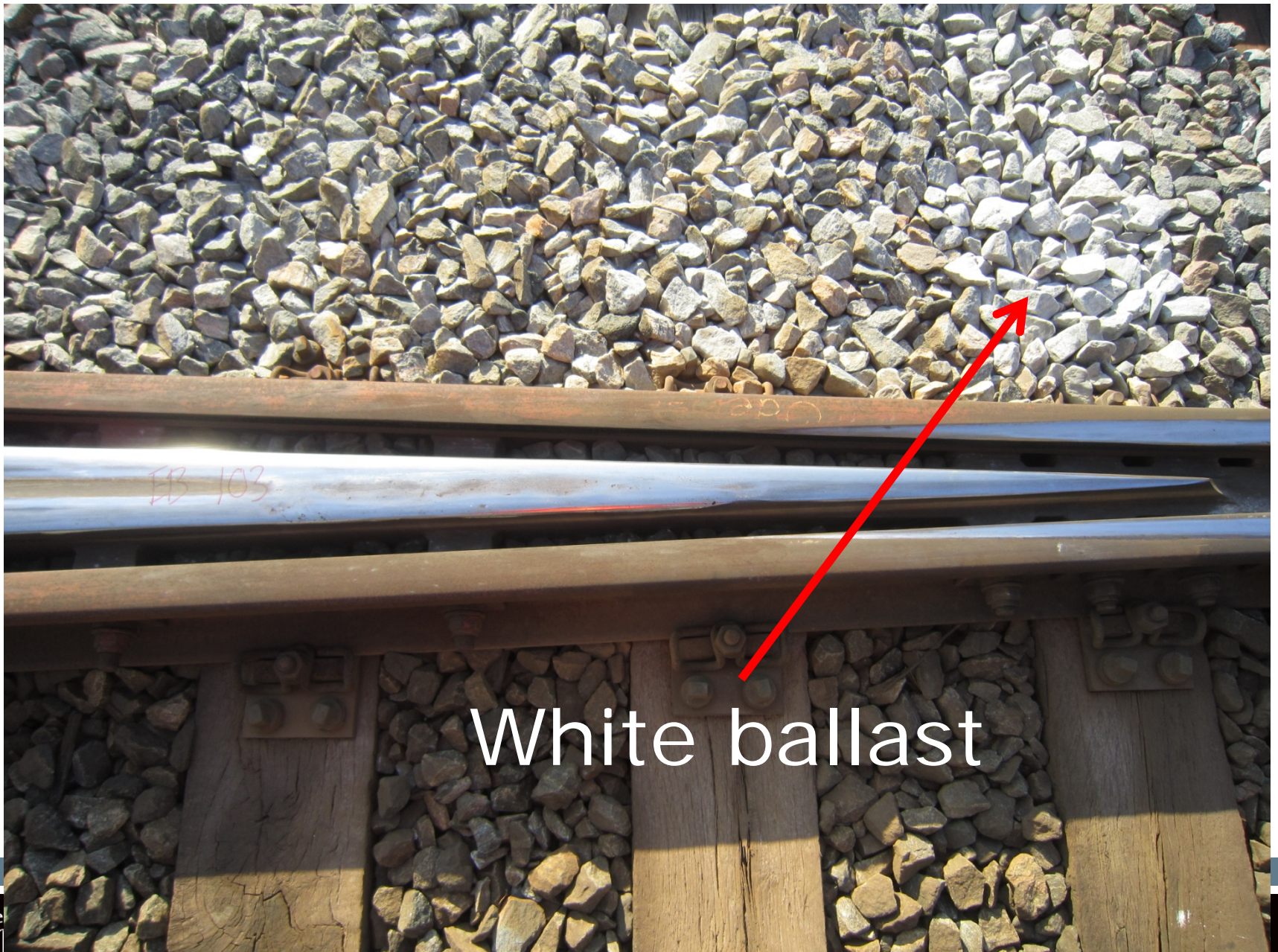




# Squat like cracks in nose of crossing







White ballast



# Noise complaints because of bad geometry



# Maintenance of steel components in crossings:

- Manual preventive grinding
- Grinding train
- Planning train
- Manual repair welding
- Exchange of components

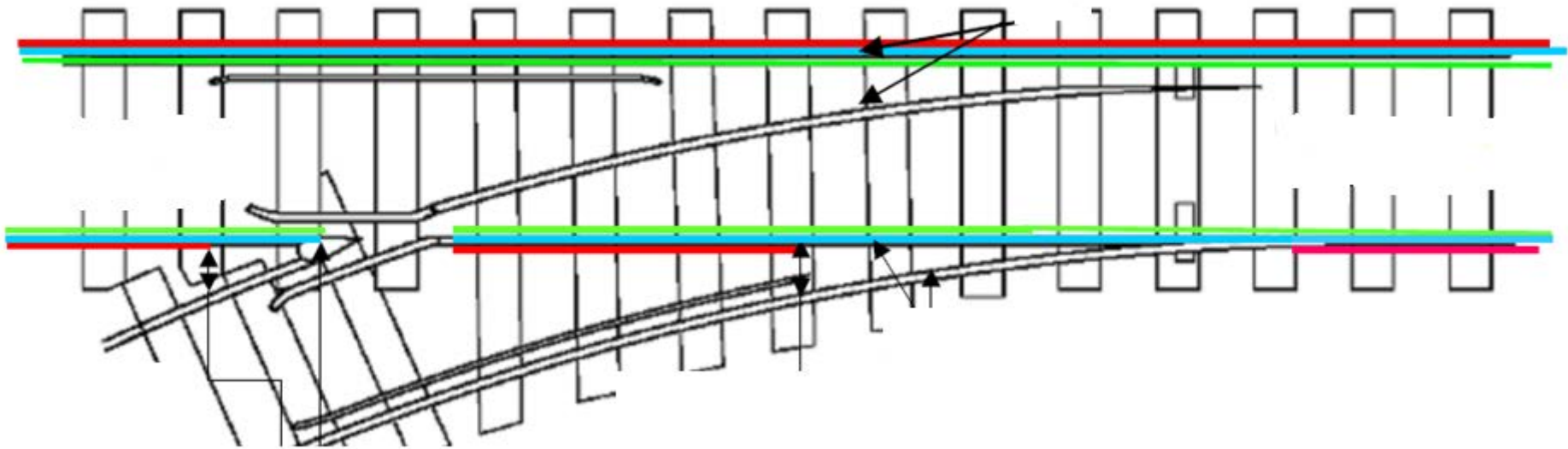




## Manual preventive grinding of lipping steel:



# Automatic grinding with train:





# Automatic planning of S&C:



Supplemental welding  
on crossing



Heavy degraded nose of crossing – to be exchanged!



# Noise measuring close to wheel





High noise from track ....

means often that something is wrong!

# Correlations between degraded steel components (eg. S&C 's) and noise.



- Alle måledata bliver lagt ind i Banedanmarks database, IRISYS
- Da IRISYS indeholder en mængde oplysninger om sporet og dets komponenter, kan måledata samkøres med alle disse øvrige oplysninger og give ny og vigtig viden om sporet og dets tilstand og udvikling



# Noise measurements in Banedanmark

Correlations between degraded steel components (eg. in S&C 's) and noise.

To detect degradation in an early stage to optimize maintenance activities – e.g. milling.

*Any experiences with use of noise measurements?*

**HANK YOU**  
**FOR YOUR ATTENTION**





# NDT at transition zone nose/wing

- Visual test including photos
- Profile measurements with laser scanner "Calibri")
- Hardness measurements ("Eqoutip" )
- Penetrant test of small cracks

